

P4 Indoor 1/16 Scan 256*128mm LED Module

Specification

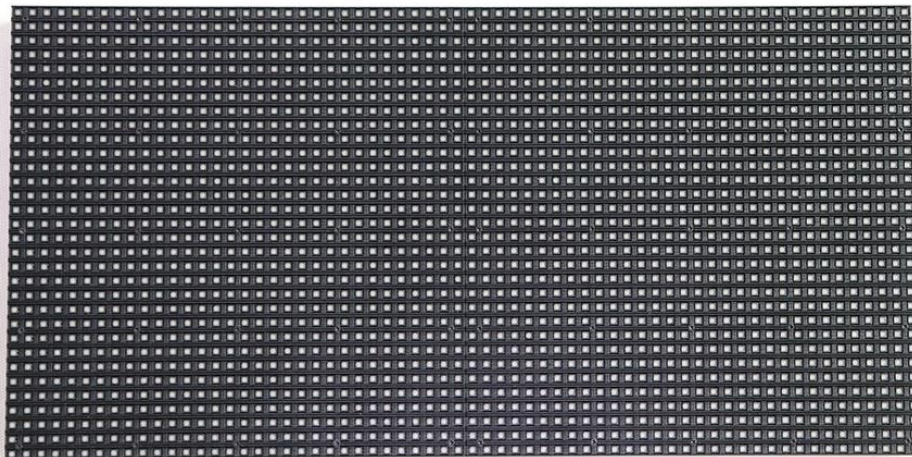
Model No.: **P4-I16S-SMD2121-64x32**

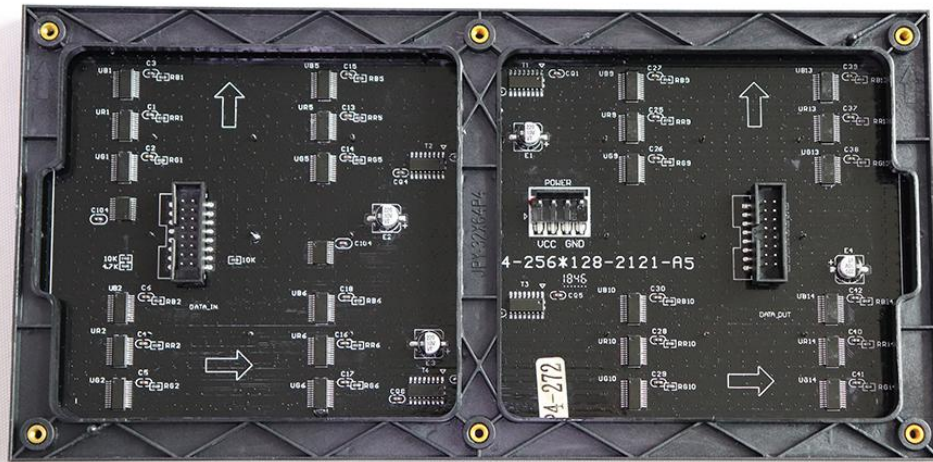
LED Lamp Specification



| Color | Package | Intensity | Viewing Angle | Wavelength | Testing Conditions |
|-------|---------|------------|---------------|------------|--------------------|
| Red | SMD2121 | 70-100mcd | 120°/120° | 620-625nm | 25℃,20mA |
| Green | | 120-200mcd | 120°/120° | 515-530nm | 25℃,10mA |
| Blue | | 30-40mcd | 120°/120° | 465-475nm | 25℃,5mA |

Module Photo





Module Parameter

| | |
|---------------------|--|
| Pixel Pitch | 4mm |
| Pixel Configuration | SMD2121 |
| Density | 62,500 pixels/m ² |
| Module Resolution | 64pixel(L) * 32pixel(H) |
| Module Dimension | 256mm(L) * 128mm(H) * 18mm(D) |
| Driving Mode | Constant current, 1/16 duty |
| Module Mask | Pure black mask---high contrast screen |

Electricity Parameter

Optical Ratings

| | |
|------------------------|---|
| Brightness | ≥1,000 cd/m ² |
| Viewing Angle | 120°(Horizontal); 120°(Vertical) |
| Best Viewing Distance | ≥4m |
| Gray Grade | 14 bits |
| Display Color | 4.4 trillion colors |
| Brightness Adjustment | 100 grades by software or automatically by sensor |
| Max. Power Consumption | 22 W |

Control System

| | |
|-------------------|--|
| Frame Frequency | ≥60Hz |
| Refresh Frequency | ≥1,920Hz |
| Input Signal | Composite Video, S-video, DVI, HDMI, SDI, HD-SDI |
| Control Distance | 100m(Ethernet cable); 20KM(optical fiber cable) |
| Support VGA Mode | 800*600, 1024*768, 1280*1024, 1600*1200 |

| | |
|---------------------------|--|
| Color Temperature | 5000—9300 adjustable |
| Brightness Correction | Pixel by pixel, module by module, cabinet by cabinet |
| Reliability | |
| Working Temperature | -20~+60 °C |
| Storage Temperature | -30~+70 °C |
| Working Humidity | 10%~90% RH |
| Lifetime | 100,000 hours |
| MTBF | 5000 hours |
| Continuous Operating Time | ≥72 hours |
| Protection Grade | IP31 |
| Out-of-Control Pixel Rate | ≤0.01% |

Package



