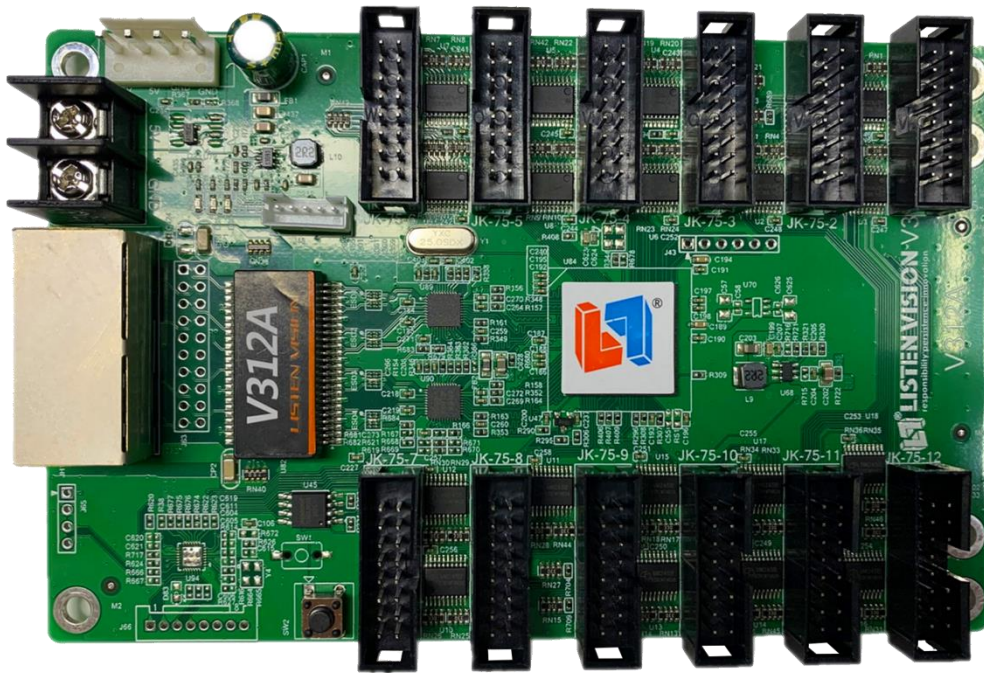


# Full-color Receiver Controller

## LS-V312A

### Specification



Shanghai Listen Vision Technology Inc.  
22/09/2020

## Brief introduction

LS-V312A is the third-generation full-color receiving card launched by Shanghai Listen Vision. It has 12\* HUB75E interfaces on the board, supporting any scan types from static to 64S, supporting mainstream conventional IC/dual lock IC/high refresh IC. Adopting advanced design & high-quality components, the hardware can ensure the stable working and display . It has 5V anti-reverse connection protection circuit, supporting the working temperature from -40 to 85 degrees. Besides, its ultra-wide voltage is from 3.8V to 6V .

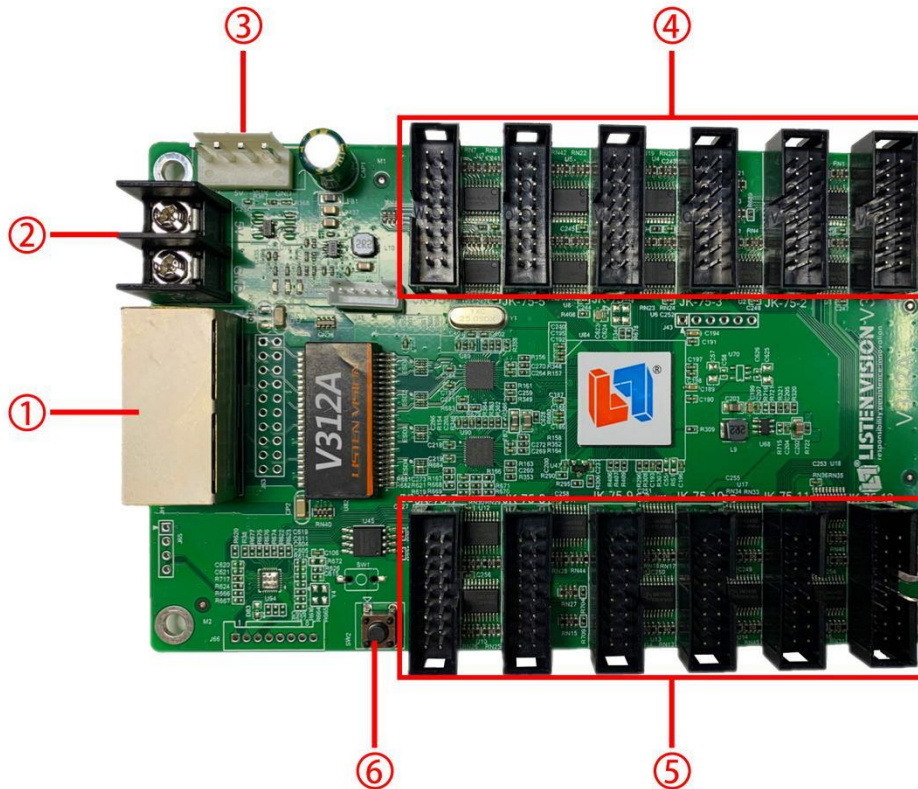
## Function

1. On board standard HUB75E interface, reducing connector connections, with high stability and high reliability;
2. Advanced design, high quality components, 5V anti-reverse connection protection circuit, working temperature from -40 to 85 degrees, ultra-wide voltage 3.8V-6V,which ensured stable working and display;
3. With VH3.96-4WV terminal blocks on board of the hardware, which can be used universally with LED module standard terminals, so it is convenient and flexible to install;
4. Standard unified loading, all series support 256X512 pixels,max. 256 pixels in width, max. 1024 pixels in height. User-define in width and height ;

5. Support any scan types from static to 64S;
6. Support 138 decoding/595 decoding/5958 decoding/2013/2018/5266/5366/ and other decoding methods;
7. Support industry mainstream conventional IC/dual lock IC/high refresh IC;
8. Support pixel-by-pixel correction, bright and dark line repair can be done quickly;
9. Support configuration file readback function;
10. Support upgrade or set parameter configuration on any single card/multiple-cards;
11. Support arbitrary adjustment of data group sequence, intelligent group sequence guide;
12. Support cascading intelligent guidance to quickly detect the connected screen;
13. Support arbitrary special column/row , arbitrary row order adjustment;
14. Support the module to rotate in multiples of 90 degrees;
15. Support network port, receiving card, arbitrary adjustment of XY coordinates, DIY combination, easy realization of various creative displays;
16. Supports maximum 512 pixels in width, symmetrical or asymmetrical;
17. Support one-key to replace receiving card , no need to re-debug after changing the receiving card;
18. Support dual network cable hot backup function to ensure that the LED display screen data transmission failure can be repaired independently without black screen;
19. Support dual programs backup to prevent card crashes caused by abnormalities in the updating process ;

20. Meet with the EU RoHS standard;

## Interface introduction



- ① :1000M LAN1/2
- ② :Power port
- ③ :Power connector
- ④ :HUB75E 1-6ports
- ⑤ :HUB75E 7-12ports
- ⑥ :Test button

## Interface definition

The definition of hub 75E interfaces is as follows :

JK1			
1	R1	G1	2
3	B1	GND	4
5	R2	G2	6
7	B2	E	8
9	A	B	10
11	C	D	12
13	DCLK1	LAT	14
15	OE	CS	16

## Hardware parameters

